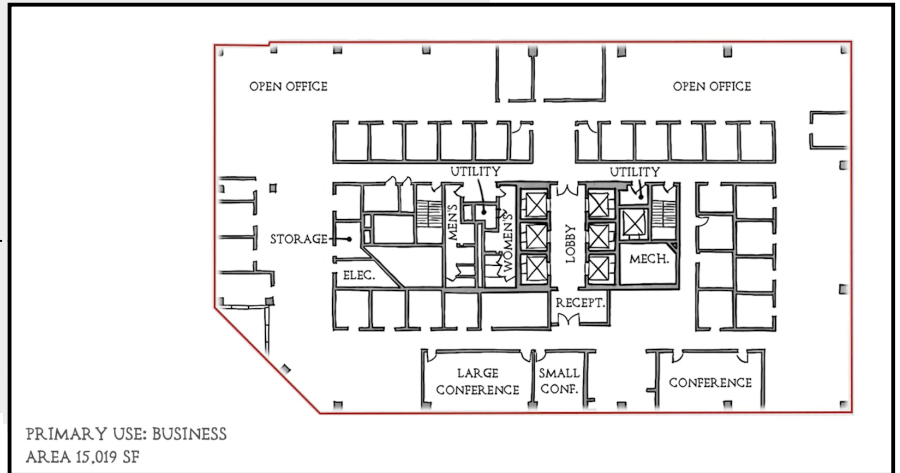
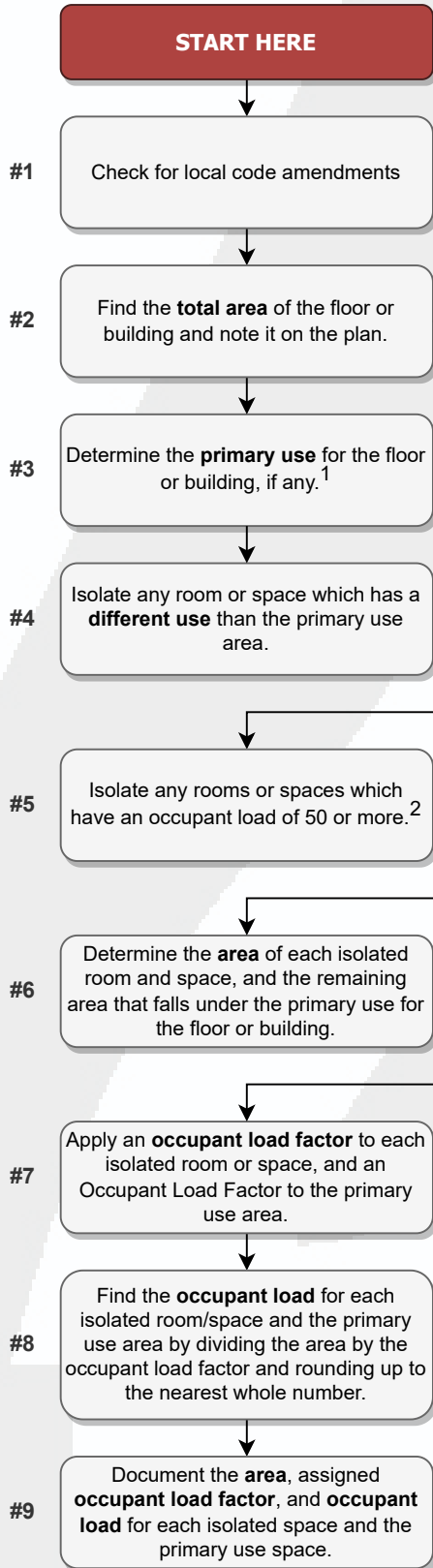


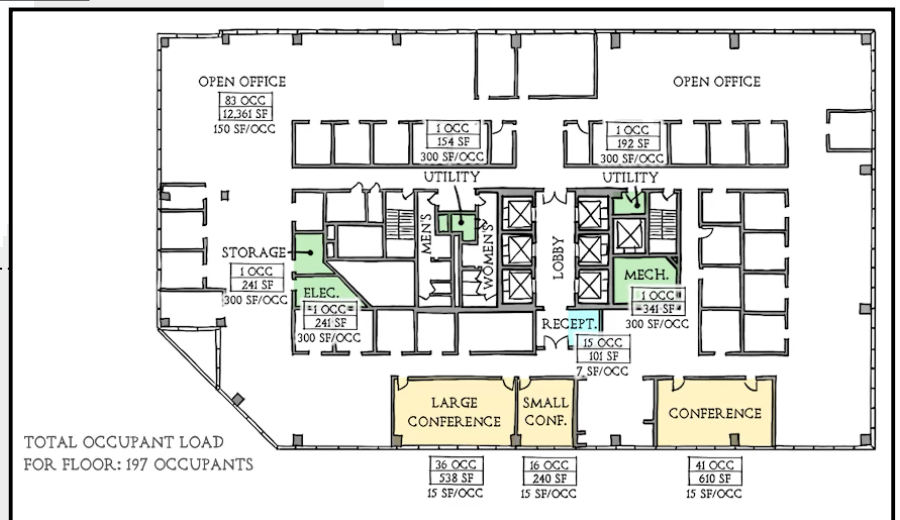
CALCULATING OCCUPANT LOADS

UNDER IBC/IFC 2000-2021 & NFPA 13 2002-2022 EDITIONS

This flowchart covers the process for determining an occupant load for a floor level. This is a resource from MeyerFire University. Learn more at www.meyerfireuniversity.com.



The primary use (not an official term) for this office floor level is for business purposes.



Here, rooms and spaces of a different intended use are isolated and calculated separately from the bulk of the floor plan (primarily used as business).

¹ This is the way the building is intended to be used, which affects the use and occupant load, not the building's occupancy type. Does the floor/building have one primary and consistent use throughout?
² This helps clarify which portions of the plans are subject to additional requirements. A large conference room with 50 or more occupants, for example, will usually require two exit access doors.

