

FIVE COMMON MYTHS OF THE BUILDING CODE



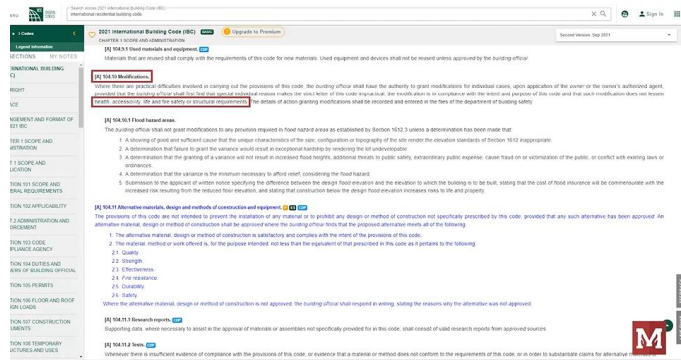
MYTH #1 "IF IT AIN'T CAUGHT, IT'S OK"

FACT:
ALL BUILDINGS MUST BE DESIGNED TO CODE



MYTH #2

**"EGRESS CAN BE LOCKED WITH
RELEASE OF FIRE ALARM"**



NOTES

A large grid of dotted lines for taking notes.



M



M

MYTH #3

"ALLOWABLE AREA IS TOTAL AREA"

M

2018 International Building Code (IBC) Upgrade to Premium

Section 506.2 Single occupancy, multi-story buildings

The allowable area of a single occupancy building with more than one story above grade plane shall be determined in accordance with Equation 5-2:

$$A_s = A_a + A_{IR} + A_{IS} + A_{IS} + A_{IS}$$

where:

- A_a = Allowable area (square feet).
- A_{IR} = Tabular allowable area factor (NF, S120, S130 or BA value, as applicable) in accordance with Table 506.2.
- A_{IS} = Area factor increase due to footage (percent) as calculated in accordance with Section 506.3.
- A_{IS} = Actual number of building stories above grade plane, not to exceed three. For buildings equipped throughout with an automatic sprinkler system installed in accordance with Section 903.3.1.2, use the actual number of building stories above grade plane, not to exceed four.

No individual story shall exceed the allowable area (A_a) as determined by Equation 5-2 using the value of $S_p = 1$.

Section 506.2.1 Mixed occupancy, multi-story buildings

Each story of a mixed occupancy building with more than one story above grade plane shall individually comply with the applicable requirements of Section 506.1. For buildings with more than three stories above grade plane, the total allowable area shall be such that the aggregate sum of the ratios of the actual area of each story divided by the allowable area of each story, determined in accordance with Equation 5-2, shall not exceed three:

$$\sum \frac{A_{i,j}}{A_{a,i}} \leq 3$$

where:

- $A_{i,j}$ = Allowable area (square feet).
- $A_{a,i}$ = Tabular allowable area factor (NF, S120, S130 or BA value, as applicable) in accordance with Table 506.2.
- A_{IS} = Area factor increase due to footage (percent) as calculated in accordance with Section 506.3.
- A_{IS} = Area factor increase due to footage (percent) as calculated in accordance with Section 506.3.

Exception: For buildings designed as separated occupancies under Section 506.4 and equipped throughout with an automatic sprinkler system installed in accordance with Section 903.3.1.2, the total building area shall be such that the aggregate sum of the ratios of the actual area of each story divided by the allowable area of such stories determined in accordance with Equation 5-2 based on the applicable provisions of Section 506.1, shall not exceed four.

506.2.1.1 Group H-2 or H-3 mixed occupancies

For a building containing Group H-2 or H-3 occupancies, the allowable area shall be determined in accordance with Section 506.2.2, with the sprinkler system increase applicable only to the portions of the building Group H-2 or H-3.

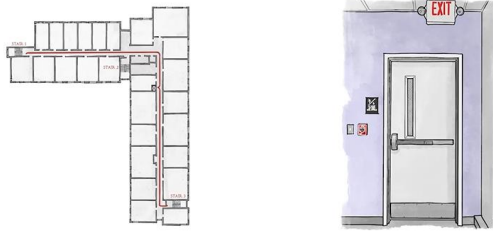
506.3 Footage increase

Every building shall adjoin or have access to a public way to receive an area factor increase based on footage. Area factor increase shall be determined in accordance with Sections 506.3.1 through 506.3.3.

M

NOTES

A large grid area for taking notes, consisting of a series of small squares.

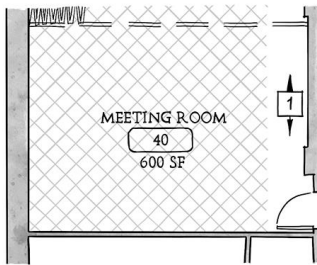


MYTH #5

"SMALL ASSEMBLY SPACES USE BUSINESS OCCUPANT LOAD FACTOR"

M

M



M

M

NOTES

A large grid of dots for taking notes.