

PRESCRIPTIVE VS. PERFORMANCE-BASED

INTRODUCTION TO LIFE SAFETY & BUILDING CODE SERIES BY MEYERFIRE UNIVERSITY | FEBRUARY 2023

SUMMARY

What is the difference between a **prescriptive** and **performance-based** code or code requirement?

- A **prescriptive** requirement or code generally defines detailed and specific requirements or results. These are often unambiguous.
 - Examples in practice might include a maximum travel distance, fire-rating for occupancy separation, or smoke detector spacing.
- A **performance-based** requirement or code establishes the desired end-result. Details of the “how” to achieve the end result are much less defined.
 - These can be more time-consuming, potentially more difficult to implement, and can be difficult to understand.
 - However, they also can quantify risk, provide an equivalent or better-level of life safety, and be more cost-effective overall.



A Prescriptive Order
("I would like three slices of cheese pizza")



A Performance-Based Order
("I would like to no longer be hungry")

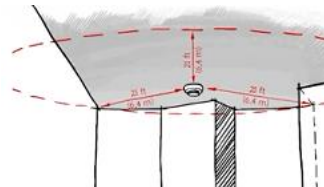
Examples of **Prescriptive** Requirements:



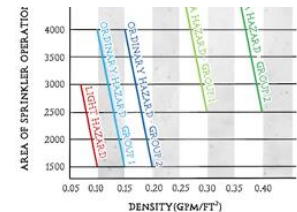
Travel Distance



Occupancy Separation Fire-Rating



Smoke Detector Spacing



Sprinkler Design Densities

Examples of **Performance-Based** Requirements:



Design of an Engineered Smoke Control System

VIDEO LINK

www.meyerfire.com/university/prescriptive-vs-performance-based-requirements

GET MORE LIKE THIS

This page is from MeyerFire University. Get updates & more here:
[Join MeyerFire University](#) | [Course & Video Catalog](#) | [Video Library](#)