

SPRINKLER-TO-WALL SPACING FOR STANDARD UPRIGHTS & PENDENTS?

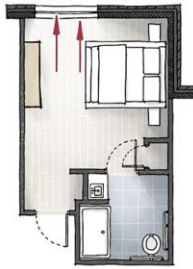
PENDENT & UPRIGHT STANDARD SPRAY

SPRINKLER-TO-SPRINKLER

- MEASURED PERPENDICULAR TO PIPE
- ALONG SLOPE OF ROOF/CEILING
- MAXIMUMS AND MINIMUMS



NFPA LINK® USED WITH PERMISSION. SEE LINK BELOW.



10.2.5.2 Maximum Distance from Walls.

10.2.5.2.1
The distance from sprinklers to walls shall not exceed one-half of the allowable distance between sprinklers as indicated in [Table 10.2.4.2.1\(a\)](#) through [Table 10.2.4.2.1\(f\)](#).

10.2.5.2.2*
The requirements of [10.2.5.2.1](#) shall not apply where walls are angled or irregular, and the maximum horizontal distance between a sprinkler and any point of floor area protected by that sprinkler shall not exceed 0.75 times the allowable distance permitted between sprinklers, provided the maximum perpendicular distance is not exceeded.

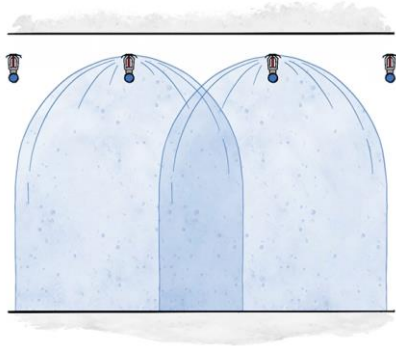
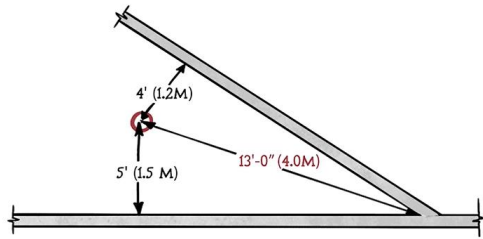
10.2.5.2.3*
The requirements of [10.2.5.2.1](#) shall not apply within small rooms as defined in [3.3.206](#).

10.2.5.2.3.1
Sprinklers shall be permitted to be located not more than 9 ft (2.7 m) from any single wall.

10.2.5.2.3.2
Sprinkler spacing limitations of [10.2.5](#) and area limitations of [Table 10.2.4.2.1\(a\)](#) shall not be exceeded.

ENHANCED CONTENT Found 0

NOTES



The distance from sprinklers to walls shall not exceed one-half of the allowable distance between sprinklers as indicated in [Table 10.2.4.2.1\(a\)](#) through [Table 10.2.4.2.1\(d\)](#).

10.2.5.2.2*

The requirements of [10.2.5.2.1](#) shall not apply where walls are angled or irregular, and the maximum horizontal distance between a sprinkler and any point of floor area protected by that sprinkler shall not exceed 0.75 times the allowable distance permitted between sprinklers, provided the maximum perpendicular distance is not exceeded.

10.2.5.2.3*

The requirements of [10.2.5.2.1](#) shall not apply within small rooms as defined in [3.3.206](#).

10.2.5.2.3.1

Sprinklers shall be permitted to be located not more than 9 ft (2.7 m) from any single wall.

10.2.5.2.3.2

Sprinkler spacing limitations of [10.2.5](#) and area limitations of [Table 10.2.4.2.1\(a\)](#) shall not be exceeded.

ENHANCED CONTENT

Expand



3.3.38 Compact Storage.

Storage on solid shelves not exceeding 36 in. (900 mm) in total depth, arranged as part of a compact storage module, with no more than 30 in. (750 mm) between shelves vertically and with no internal vertical flues spaces other than those between individual shelving sections. (AUT-SSD)

3.3.39 Compact Storage Module.

A type of shelving unit consisting of compact storage whereby the units move to allow for storage to be pushed together creating a storage unit with no flues or minimal spaces between units. Aisles are created by moving the shelving unit. Compact storage modules can be manual or electric in operation. (AUT-SSD)

3.3.40 Compartment.

A space completely enclosed by walls and a ceiling. Each wall in the compartment is permitted to have openings to an adjoining space if the openings have a minimum listed depth of 8 in. (200 mm) from the ceiling and the total width of the openings in each wall does not exceed 8 ft (2.4 m). A single opening of 36 in. (900 mm) or less in width without a listed is permitted where there are no other openings to adjoining spaces. (AUT-SSS)

ENHANCED CONTENT

Expand

3.3.41* Compartmented.

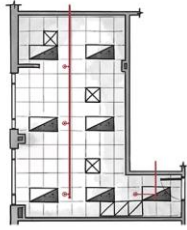
The rigid separation of the products in a container by dividers that form a stable unit under fire conditions. (AUT-SSD)



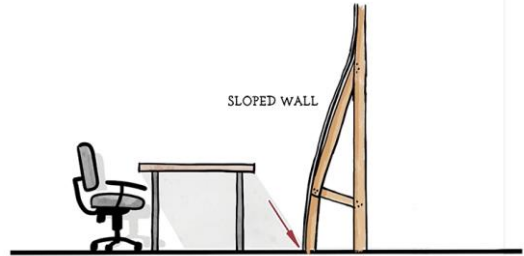
NOTES

Grid area for notes.

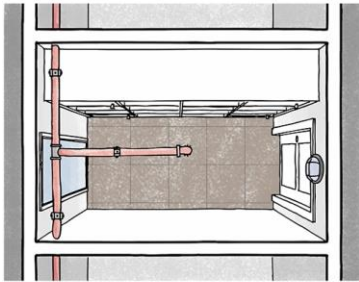
SPRINKLER-TO-WALL SPACING FOR STANDARD UPRIGHTS & PENDENTS?



M



M



M

STANDARD SPRAY PENDENT & UPRIGHT

• DISTANCE TO WALL IS 1/2 ALLOWABLE SPACING

EXCEPTIONS:

- ODD CORNERS
- CURVED WALLS
- SMALL ROOM RULE

M

NOTES

Grid of dots for taking notes.