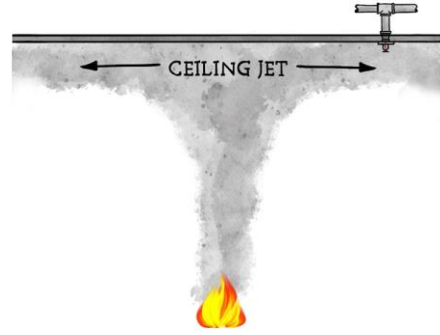
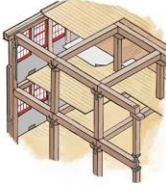


INTRODUCTION TO UNOBSTRUCTED CONSTRUCTION



ENHANCED CONTENT Expand

3.3.43.1* Obstructed Construction.

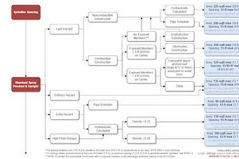
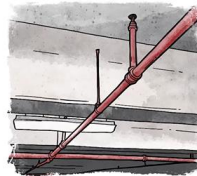
Panel construction and other construction where beams, trusses, or other members impede heat flow or water distribution in a manner that materially affects the ability of sprinklers to control or suppress a fire. (AUF-SS)

3.3.43.2* Unobstructed Construction.

Construction where beams, trusses, or other members do not impede heat flow or water distribution in a manner that materially affects the ability of sprinklers to control or suppress a fire. Unobstructed construction has horizontal structural members that are not solid, where the openings are at least 70 percent of the cross-section area and the depth of the member does not exceed the least dimension of the openings, or all construction types, with the exception of panel construction, where the spacing of structural members exceeds 7'1/2 ft (2.3 m) on center. (AUF-SS)

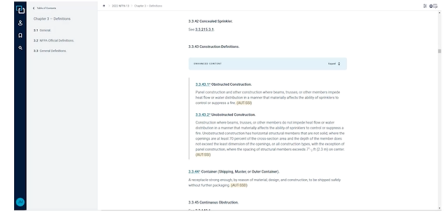
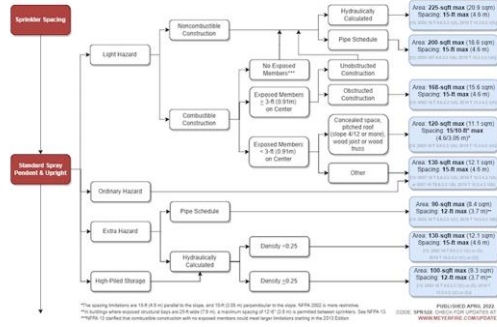
3.3.44* Container (Shipping, Master, or Outer Container).

A receptacle strong enough, by reason of material, design, and construction, to be shipped safely without further packaging. (AUF-SSD)



NOTES

A large area of dotted lines provided for taking notes.



NOTES

Grid area for notes.