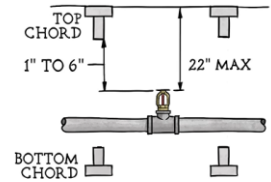
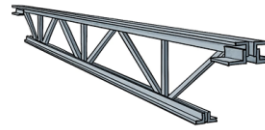
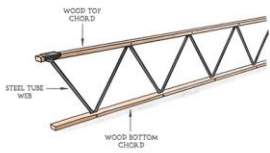
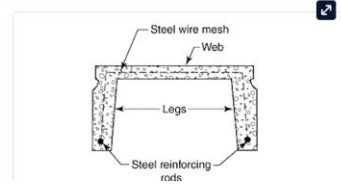
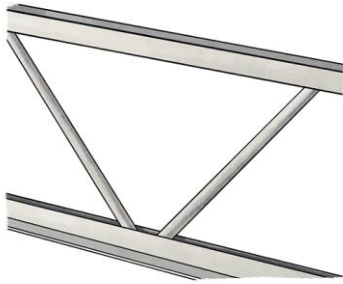


# EXAMPLES OF OBSTRUCTED CONSTRUCTION: BAR JOISTS

chord members connected by open web members supporting a roof or floor deck with top and bottom members greater than 4 in. (100 mm) in depth. [See **Figure A.3.3.43.1(c)**.]

(10) **Bar Joist Construction (Wood or Steel)**. The term *bar joist construction* refers to construction employing joists consisting of steel truss-shaped members. Wood truss-shaped members, which consist of wood top and bottom chord members with steel tube or bar webs, are also defined as bar joists. Bar joists include noncombustible or combustible roof or floor decks on bar joist construction with top and bottom chord members greater than 4 in. (100 mm) in depth. [See **Figure A.3.3.43.2(a)** and **Figure A.3.3.43.2(b)** for examples of bar joist construction.] (AUT-SSI)



## NOTES

Grid of dotted lines for notes.