

# FIRE ALARM REQUIREMENTS FOR I OCCUPANCIES



M



M



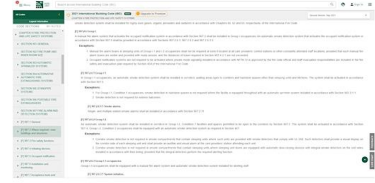
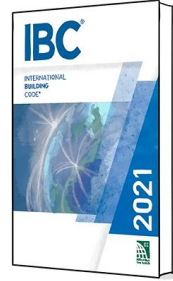
M



M

## NOTES

A large area of the page is filled with a grid of small dots, intended for handwritten notes.



2021 International Building Code (IBC) Upgrade to Premium

Smoke detectors shall be installed for highly toxic gases, organic peroxides and oxidizers in accordance with Chapters 60, 62 and 65, respectively, of the International Fire Code.

**§102.2.6 Group 1.**  
A manual fire alarm system that activates the occupant notification system in accordance with Section 907.5 shall be installed in Group 1 occupancies. An automatic smoke detection system that activates the occupant notification system in accordance with Section 907.5 shall be provided in accordance with Sections 907.2.6.1, 907.2.6.2 and 907.2.6.3.3.

**Exceptions:**

1. Manual fire alarm boxes in sleeping units of Group 1-1 and 1-2 occupancies shall not be required at exits if located at all care providers' control stations or other constantly attended staff locations, provided that such manual fire alarm boxes are visible and provided with lobby access, and the locations of travel required in Section 907.2.2.1 are not exceeded.
2. Occupant notification systems are not required to be activated where private mode signaling installed in accordance with 907B.7.2 is approved by the fire code official and staff evacuation responsibilities are included in the fire safety and evacuation plan required by Section 904 of the International Fire Code.

**§102.2.6.1 Group 1-1.**  
In Group 1-1 occupancies, an automatic smoke detection system shall be installed in corridors, waiting areas open to corridors and habitable spaces other than sleeping units and kitchens. The system shall be activated in accordance with Section 907.5.

**Exceptions:**

1. For Group 1-1, Condition 1 occupancies, smoke detection in habitable spaces is not required where the facility is equipped throughout with an automatic sprinkler system installed in accordance with Section 903.2.1.1.
2. Smoke detectors are not required for exterior balconies.

**§102.2.6.1.1 Smoke alarms.**  
Single- and multiple-station smoke alarms shall be installed in accordance with Section 907.2.11.

**§102.2.6.2 Group 1-2.**  
An automatic smoke detection system shall be installed in corridors in Group 1-2, Condition 1 facilities and spaces permitted to be open to the corridors by Section 407.2. The system shall be activated in accordance with Section 907.5. Group 1-2, Condition 2 occupancies shall be equipped with an automatic smoke detection system as required in Section 907.

**Exceptions:**

1. Corridor smoke detection is not required in smoke compartments that contain sleeping units where such units are provided with smoke detectors that comply with UL 368. Such detectors shall provide a visual display on the control panel of each sleeping unit and shall provide an audible and visual alarm at the care provider's station attending each unit.
2. Corridor smoke detectors are not required in smoke compartments that contain sleeping units where sleeping unit doors are equipped with automatic door-closing devices with integral smoke detectors on the vent sides installed in accordance with their listing, provided that the integral detectors perform the required alerting function.

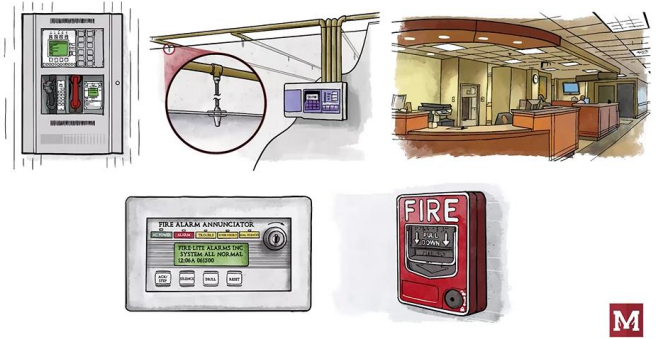
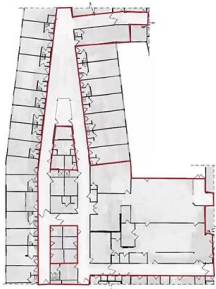
**§102.2.6.3 Group 1-3 occupancies.**  
Group 1-3 occupancies shall be equipped with a manual fire alarm system and automatic smoke detection system installed for alerting staff.



## NOTES

Grid of dots for notes.

# FIRE ALARM REQUIREMENTS FOR I OCCUPANCIES



## NOTES

A large area of dotted lines for taking notes.