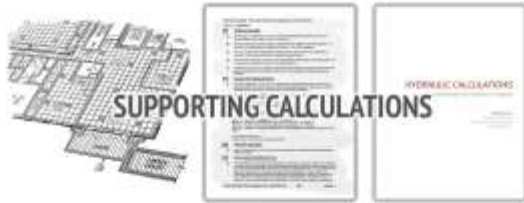
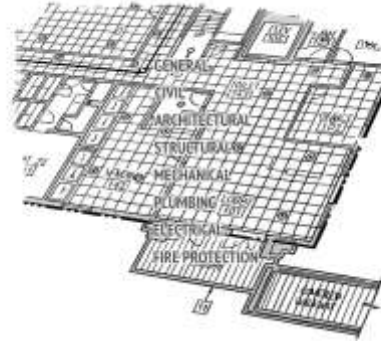


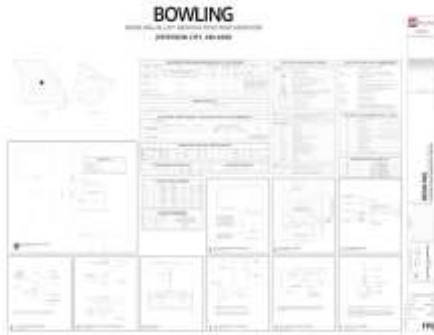
WHAT GOES INTO A SET OF PLANS?



M



M



M

DESCRIPTION	SYMBOL
GENERAL SYMBOL	
BASELINE SYMBOL	
CONCRETE SYMBOL	
STEEL SYMBOL	
GLASS SYMBOL	
MECHANICAL SYMBOL	
PLUMBING SYMBOL	
ELECTRICAL SYMBOL	
FIRE PROTECTION SYMBOL	
MECHANICAL SYMBOL	
PLUMBING SYMBOL	
ELECTRICAL SYMBOL	
FIRE PROTECTION SYMBOL	

FIRE PROTECTION SYMBOL LEGEND	
SYMBOL	DESCRIPTION
[Symbol]	BASELINE SYMBOL
[Symbol]	CONCRETE SYMBOL
[Symbol]	STEEL SYMBOL
[Symbol]	GLASS SYMBOL
[Symbol]	MECHANICAL SYMBOL
[Symbol]	PLUMBING SYMBOL
[Symbol]	ELECTRICAL SYMBOL
[Symbol]	FIRE PROTECTION SYMBOL
[Symbol]	MECHANICAL SYMBOL
[Symbol]	PLUMBING SYMBOL
[Symbol]	ELECTRICAL SYMBOL
[Symbol]	FIRE PROTECTION SYMBOL

FIRE PROTECTION
1. CONCRETE SYMBOL
2. STEEL SYMBOL
3. GLASS SYMBOL
4. MECHANICAL SYMBOL
5. PLUMBING SYMBOL
6. ELECTRICAL SYMBOL
7. FIRE PROTECTION SYMBOL
8. MECHANICAL SYMBOL
9. PLUMBING SYMBOL
10. ELECTRICAL SYMBOL

M

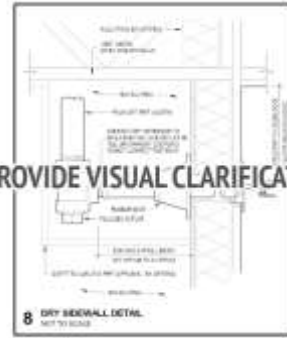
NOTES

.....

FIRE PROTECTION CODE & SCOPE NOTES

1. CODES & STANDARDS	INTERNATIONAL BUILDING CODE - 2018 EDITION INTERNATIONAL FIRE CODE - 2018 EDITION NFPA 1 - 2018 EDITION
2. SCOPE	SEE MEYERFIRE FIRE PROTECTION UNIVERSITY PROGRAM
3. LINES & FITTINGS	BLACK STEEL, SCH40E, 4" THROUGH 6" FIRE HYDRANT PIPE FITTINGS FOR 4" THROUGH 6" BLACK STEEL, SCH40E, 1/2" THROUGH 2" FIRE HYDRANT PIPE FITTINGS FOR 1/2" THROUGH 2" BLACK STEEL, SCH40E, 1/2" THROUGH 2" FIRE HYDRANT PIPE FITTINGS FOR 1/2" THROUGH 2"
4. CONNECTIONS	WELD CONNECTIONS
5. FPC	NEW (IN PLACE OF BUILDING)
6. TESTING	NOT REQUIRED, TEST PROCEDURE
7. MATERIALS	FIRE-RESISTANT MATERIALS SHALL NOT BE USED UNLESS SPECIFIED OTHERWISE IN THE MEYERFIRE FIRE PROTECTION UNIVERSITY PROGRAM

TEXT INSTRUCTIONS THAT APPLY GLOBALLY ACROSS THE ENTIRE DISCIPLINE



PROVIDE VISUAL CLARIFICATION

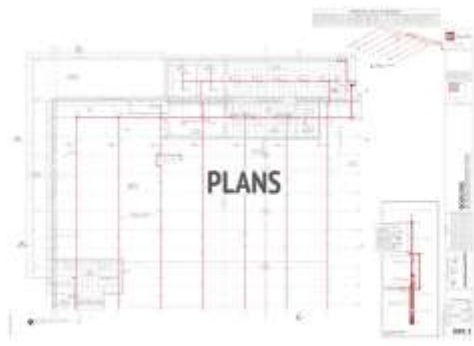


ANCHORAGE & SWAY BRACING - FIRE PROTECTION SYSTEM COMPONENTS									
NO.	DESCRIPTION	QUANTITY	UNIT	REMARKS	NO.	DESCRIPTION	QUANTITY	UNIT	REMARKS
1	ANCHORAGE	1	EA		2	SWAY BRACING	1	EA	
3	ANCHORAGE	1	EA		4	SWAY BRACING	1	EA	
5	ANCHORAGE	1	EA		6	SWAY BRACING	1	EA	
7	ANCHORAGE	1	EA		8	SWAY BRACING	1	EA	
9	ANCHORAGE	1	EA		10	SWAY BRACING	1	EA	

SPRINKLER SCHEDULE - ENTIRE PROJECT											
NO.	DESCRIPTION	QTY	UNIT	REMARKS	NO.	DESCRIPTION	QTY	UNIT	REMARKS	NO.	DESCRIPTION
1	SPRINKLER	1	EA		2	SPRINKLER	1	EA		3	SPRINKLER
4	SPRINKLER	1	EA		5	SPRINKLER	1	EA		6	SPRINKLER
7	SPRINKLER	1	EA		8	SPRINKLER	1	EA		9	SPRINKLER
10	SPRINKLER	1	EA		11	SPRINKLER	1	EA		12	SPRINKLER

SEISMIC BRACING SCHEDULE						FLEX DROP SCHEDULE					
NO.	DESCRIPTION	QTY	UNIT	REMARKS	NO.	DESCRIPTION	QTY	UNIT	REMARKS	NO.	DESCRIPTION
1	SEISMIC BRACING	1	EA		1	FLEX DROP	1	EA		1	FLEX DROP
2	SEISMIC BRACING	1	EA		2	FLEX DROP	1	EA		2	FLEX DROP
3	SEISMIC BRACING	1	EA		3	FLEX DROP	1	EA		3	FLEX DROP
4	SEISMIC BRACING	1	EA		4	FLEX DROP	1	EA		4	FLEX DROP
5	SEISMIC BRACING	1	EA		5	FLEX DROP	1	EA		5	FLEX DROP

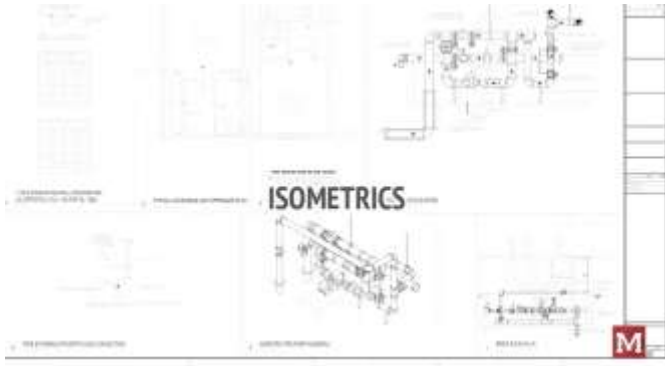
PIPE SCHEDULE SUMMARY											
NO.	DESCRIPTION	QTY	UNIT	REMARKS	NO.	DESCRIPTION	QTY	UNIT	REMARKS	NO.	DESCRIPTION
1	PIPE	1	EA		2	PIPE	1	EA		3	PIPE
4	PIPE	1	EA		5	PIPE	1	EA		6	PIPE
7	PIPE	1	EA		8	PIPE	1	EA		9	PIPE
10	PIPE	1	EA		11	PIPE	1	EA		12	PIPE



NOTES

Grid of dotted lines for handwritten notes.

WHAT GOES INTO A SET OF PLANS?



NOTES

A large grid of dotted lines for taking notes.